

The open floor plan features a custom kitchen ...

overlooking the great room and a gorgeous fireplace.

One of the best features of this smartly designed single-story is the spacious master suite featuring gorgeous 10 ft. ceilings, a custom walk-in shower, double vanity and a roomy walk-in closet. You'll also find a private second bedroom in the 1685 Avant Series with an attached bath, which makes it a perfect place for a home office.



[brownwegher.com](http://brownwegher.com)

# Model Home 1685

1,685 sq. ft.

2 Bedrooms

2 Bathrooms

3 Car Garage

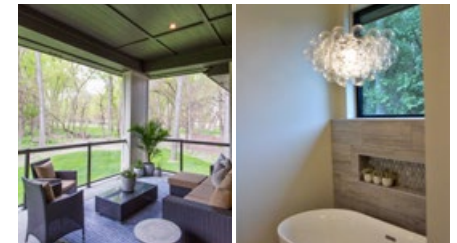
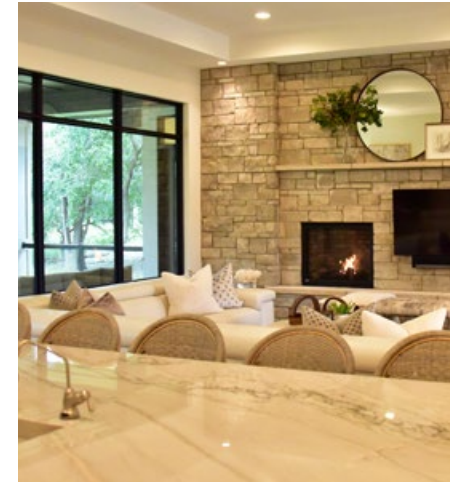
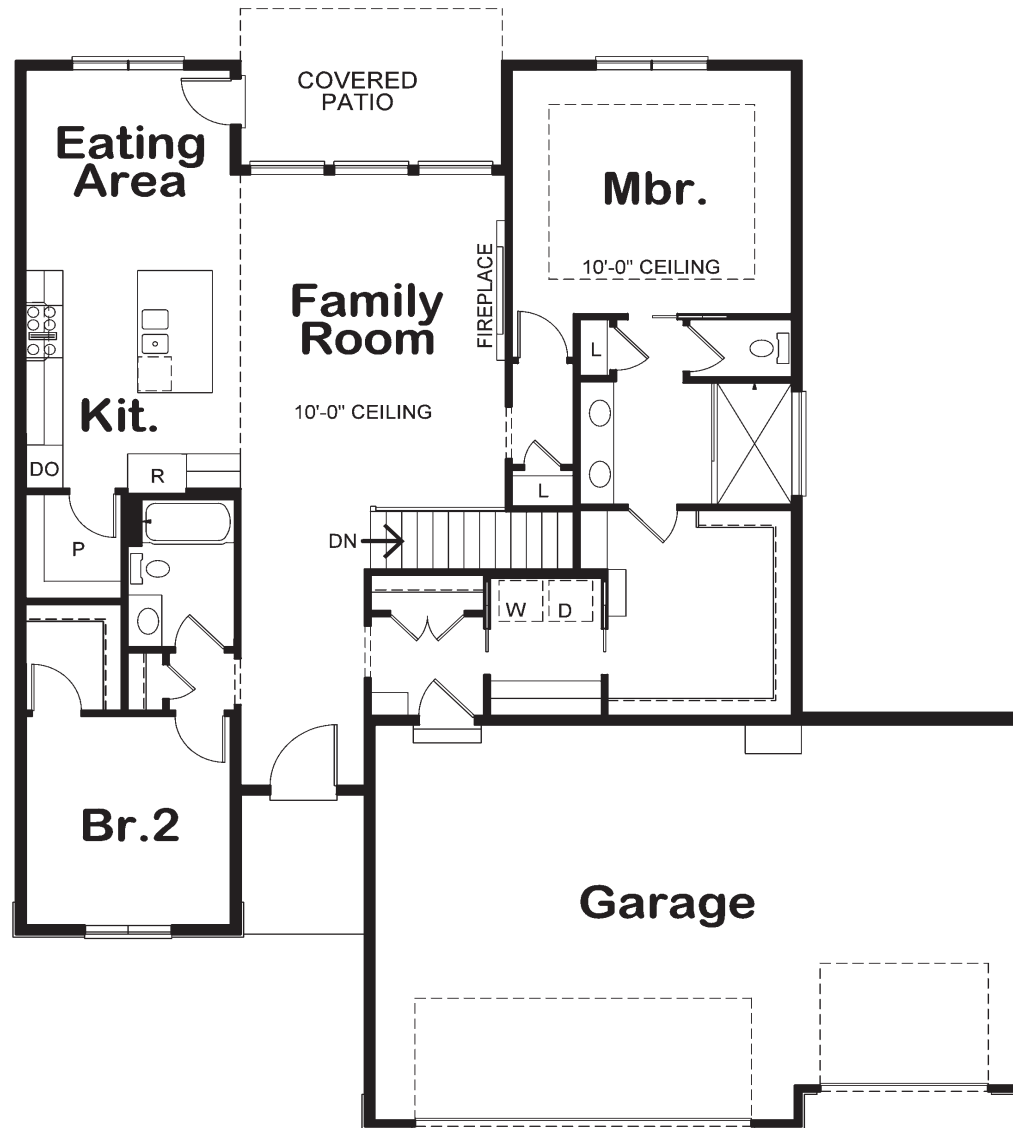
### Other Features:

Insulated Garage

Custom Kitchen

Great Room with Fireplace

The open floor plan features a custom kitchen overlooking the great room and a gorgeous fireplace, with plenty of space for entertaining thanks to bar seating along the kitchen island. There's also a lower level featuring plenty of space for extra bedrooms, an exercise room or the man cave of your dreams.



**BROWN WEGHER**  
RESIDENTIAL

605.232.4000

[brownwegher.com](http://brownwegher.com)

